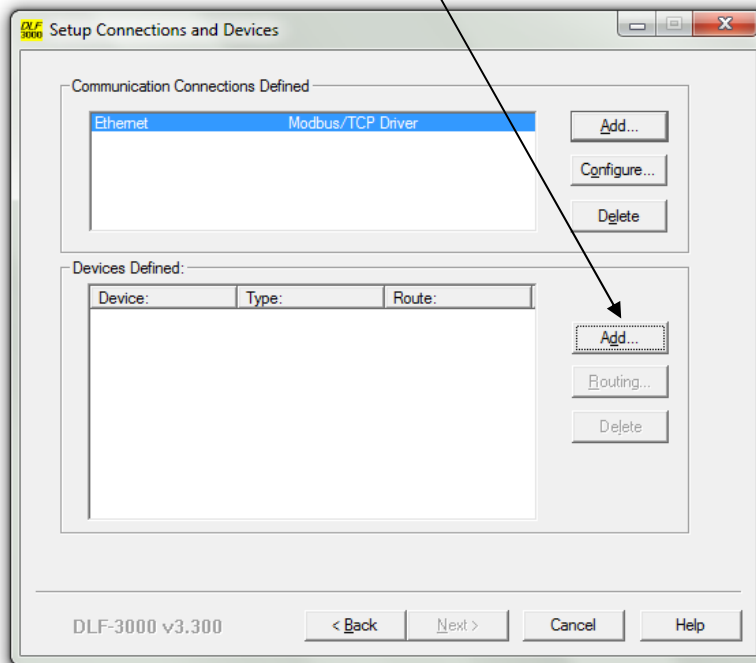
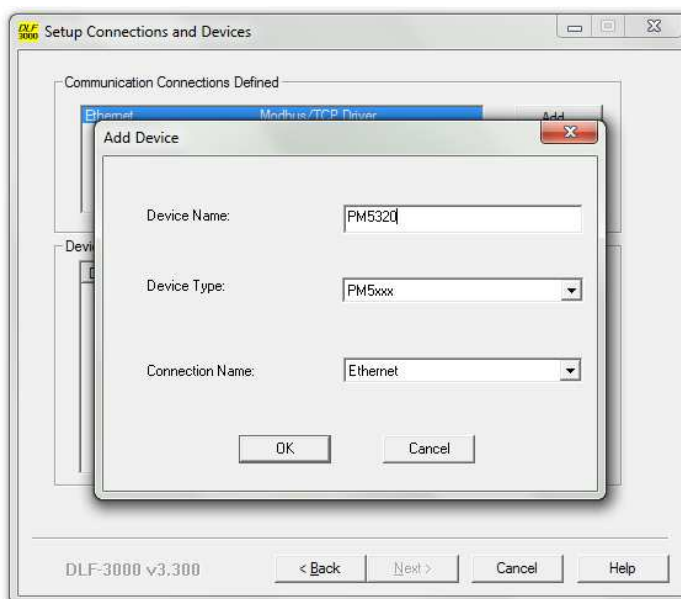


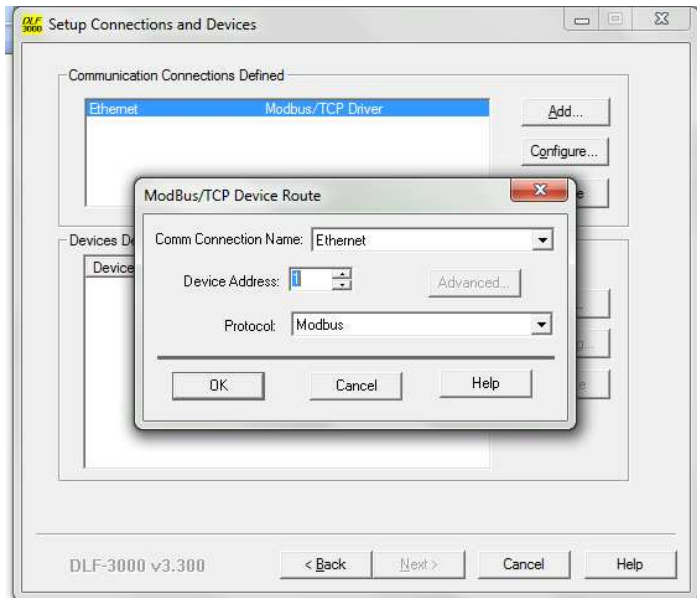
1) click on the “Add” button to add device



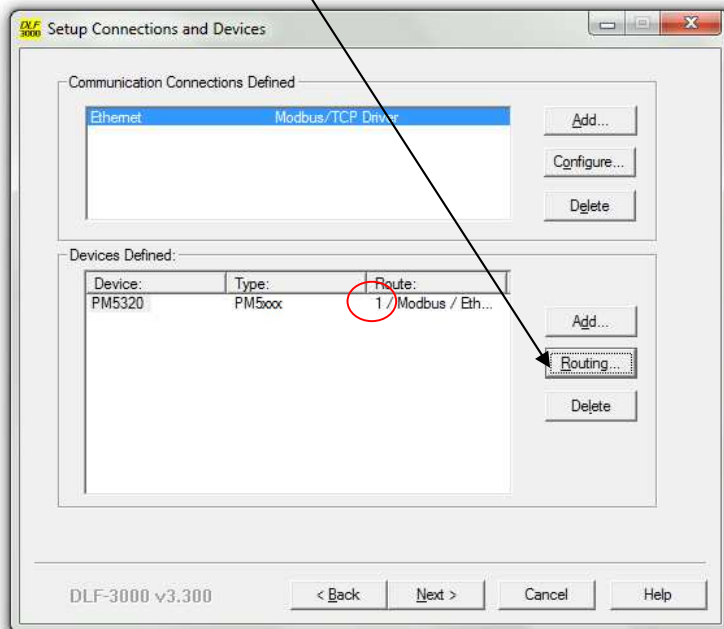
2) Type the device name of your choice, select Device type PM5xxx, and connection Name Ethernet and click “OK”



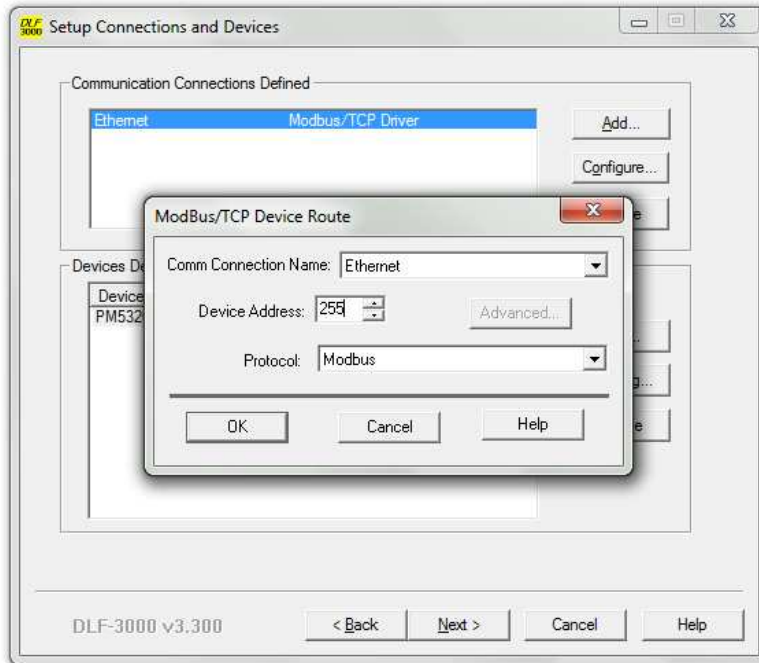
3) Select the device address anything from 1 to 247 and click 'OK'. For illustration, it is taken as 1



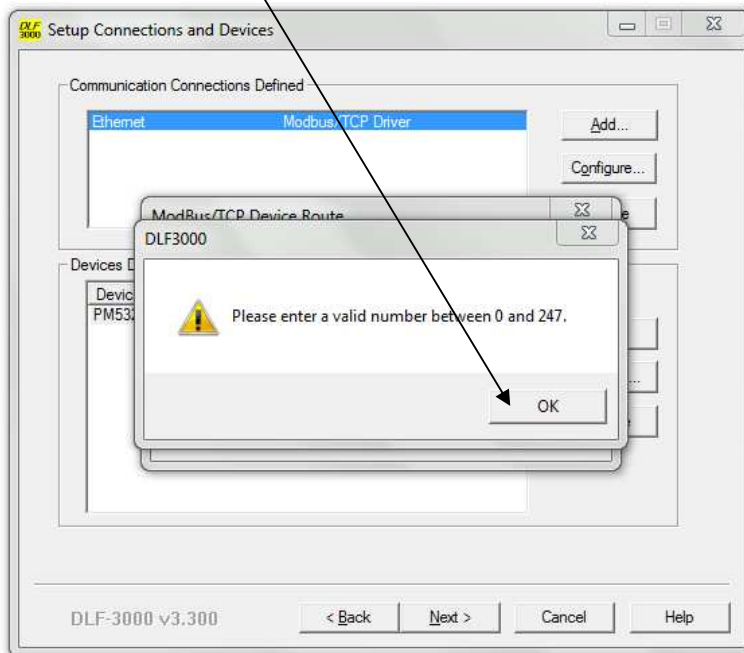
4) Click on the "Routing" option



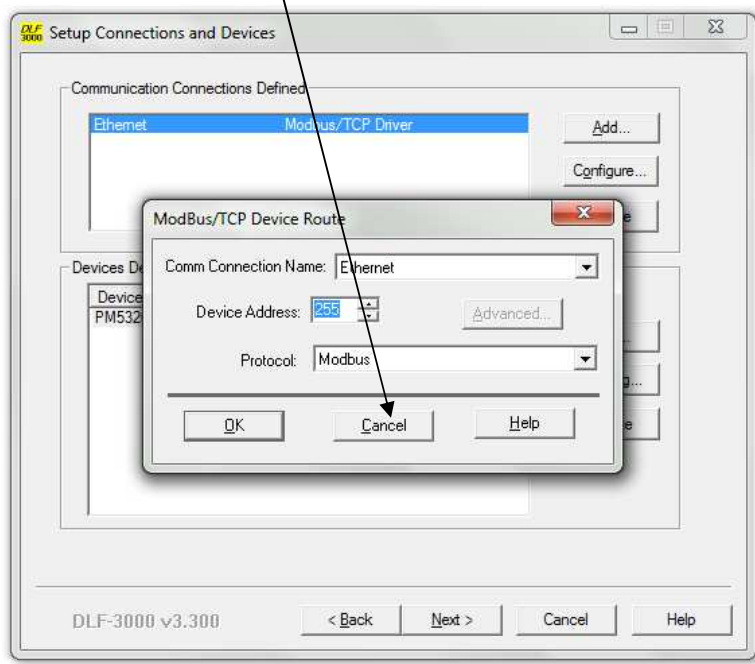
5) Select the device address as 255 and click OK



6) Keep Click Ok till the error window disappears



7) Once the error window disappeared, click "Cancel"



8) Now you can see the device address has been changed to 255.

