

# How to Upload HMI project using Vijeo Designer

**What is the purpose** To implement that still possible to upload project from HMI devices using Vijeo Designer

**What units are effected**

1. Vijeo Designer
2. HMI ( XBTGT series, GTO series, STU series

**Details** This application is divided into several parts

Section	Title
1	Parts List
2	Step by step setup
3	Online testing
4	Remarks

## Section 1; Parts list

**Parts List table** Items used in the test

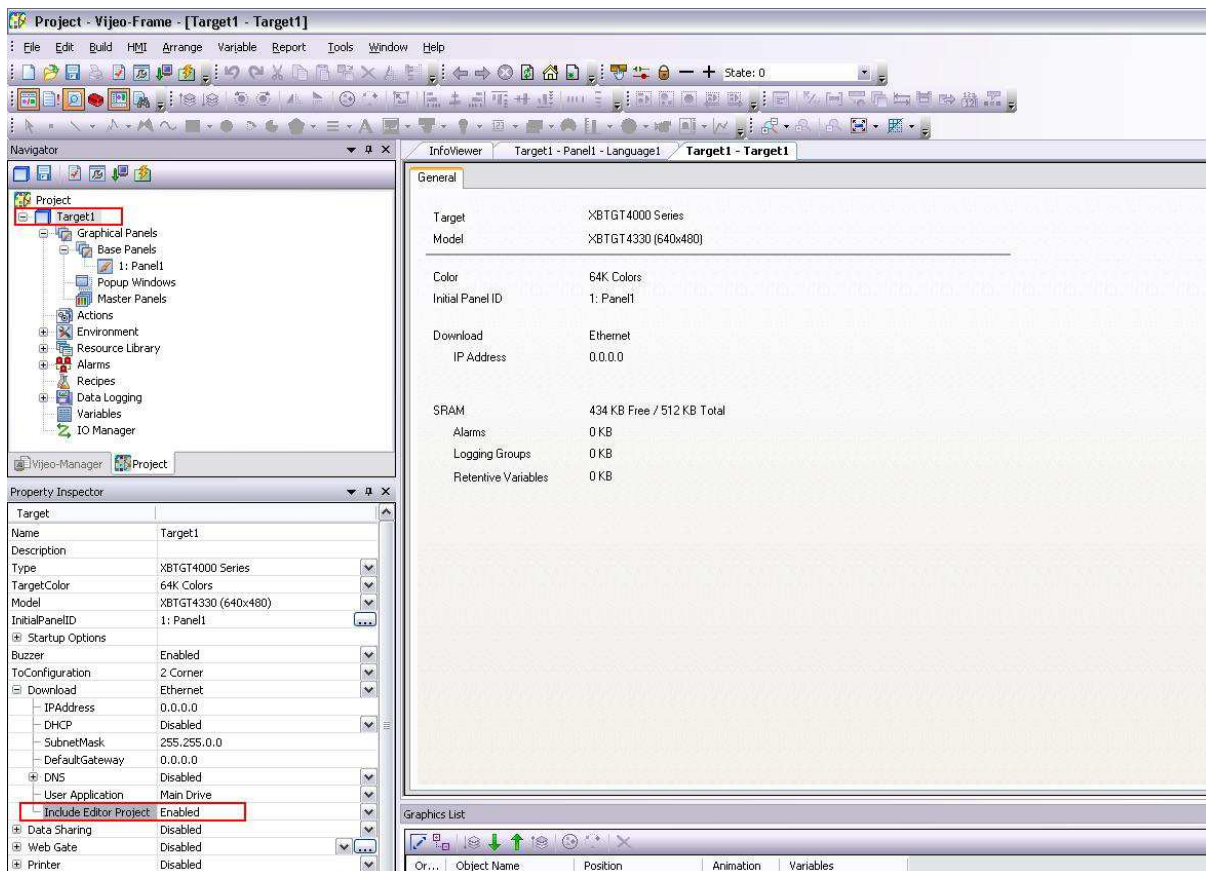
Items	Part numbers	Description
Vijeo Designer software	VJDSNDTGSVxxM	Software for HMI magelis

*Continued on next page*

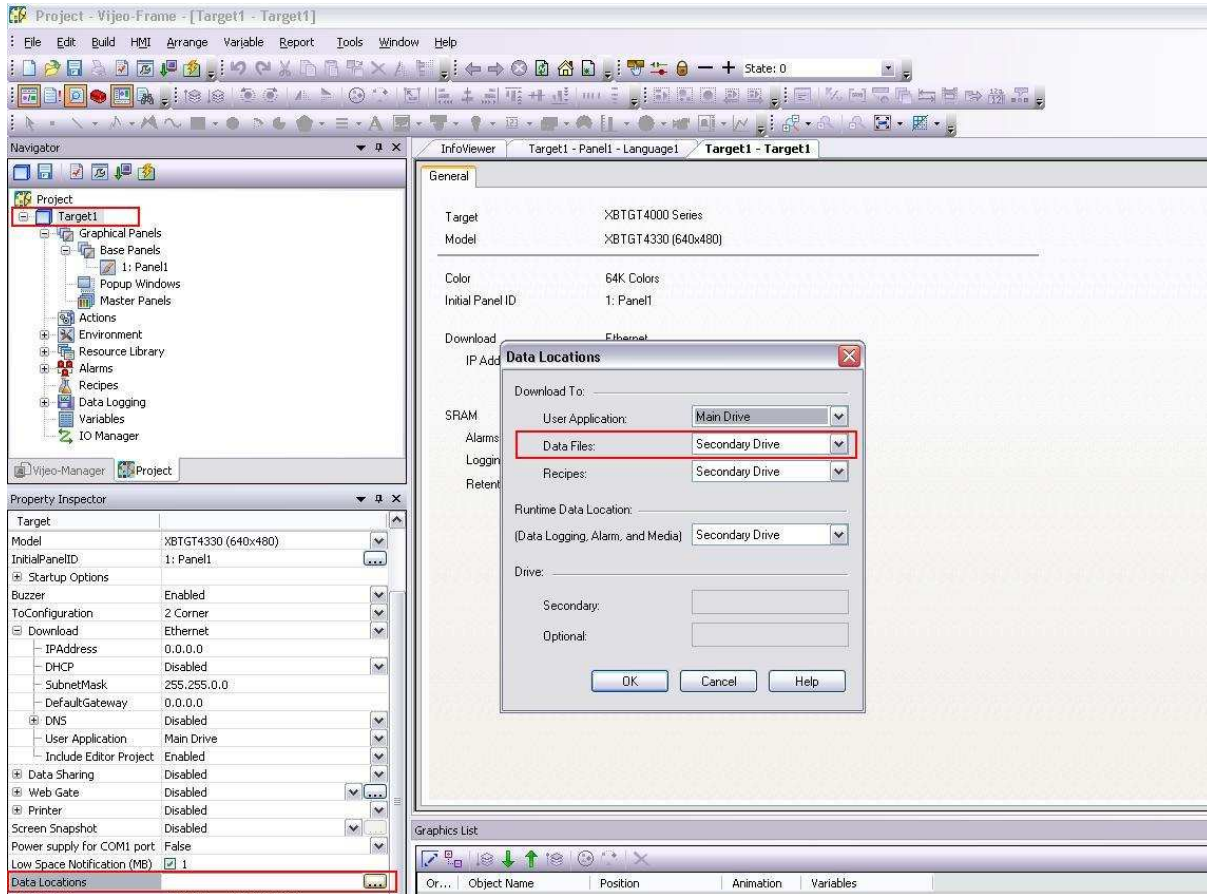
## Section 1; Parts liststep by step

### 1 - SETUP BEFORE DOWNLOAD

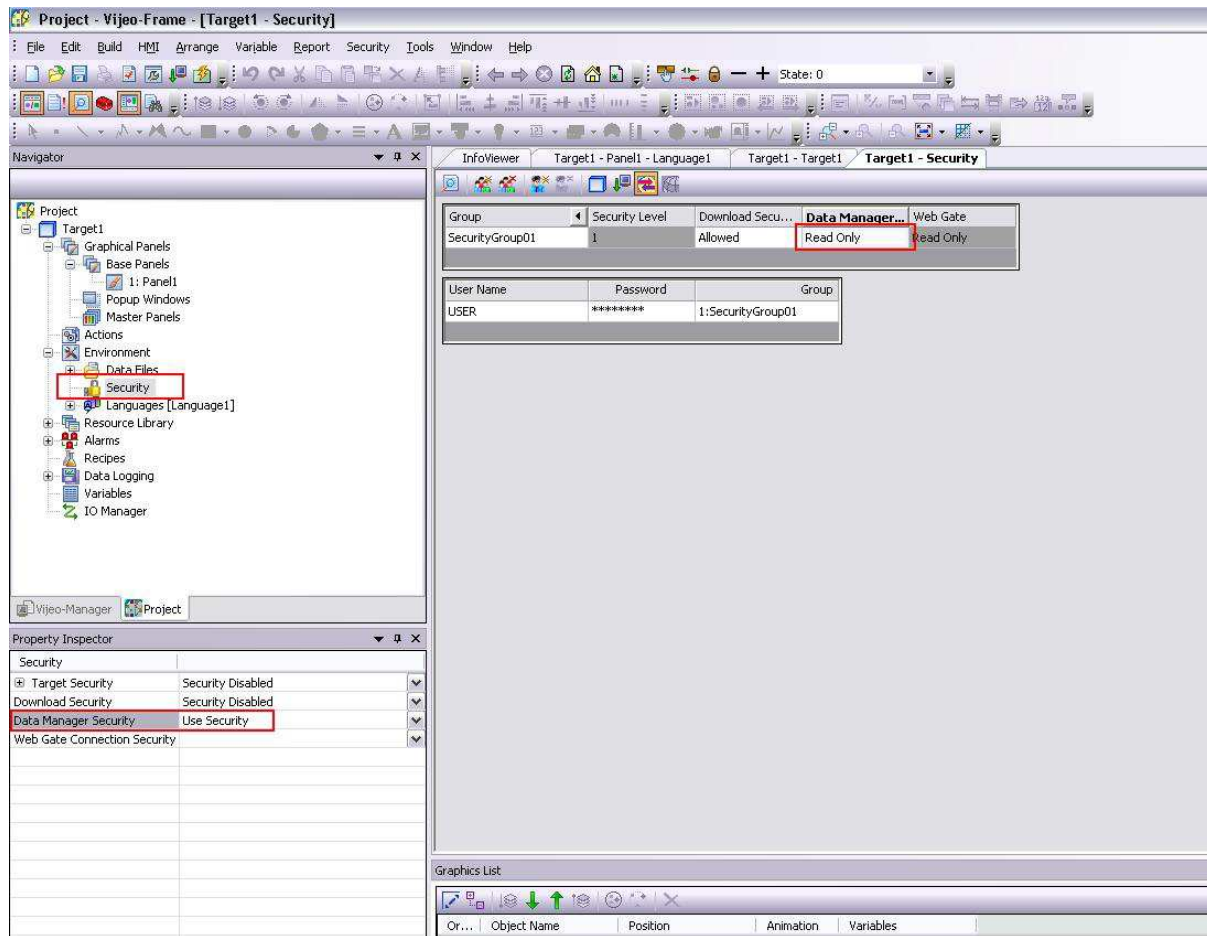
In the Target properties, in the Download menu, enable the property Include Editor Project



In the Target properties, in the Data Locations menu, set the Data Files location to "Secondary Drive" (CF card)



In the Security properties, select the property "Use Security" of Data Manager Security. Then create a security group and security user(s) with at least Read Only rights in Data Manager security



## 2 - DOWNLOAD OF THE PROJECT

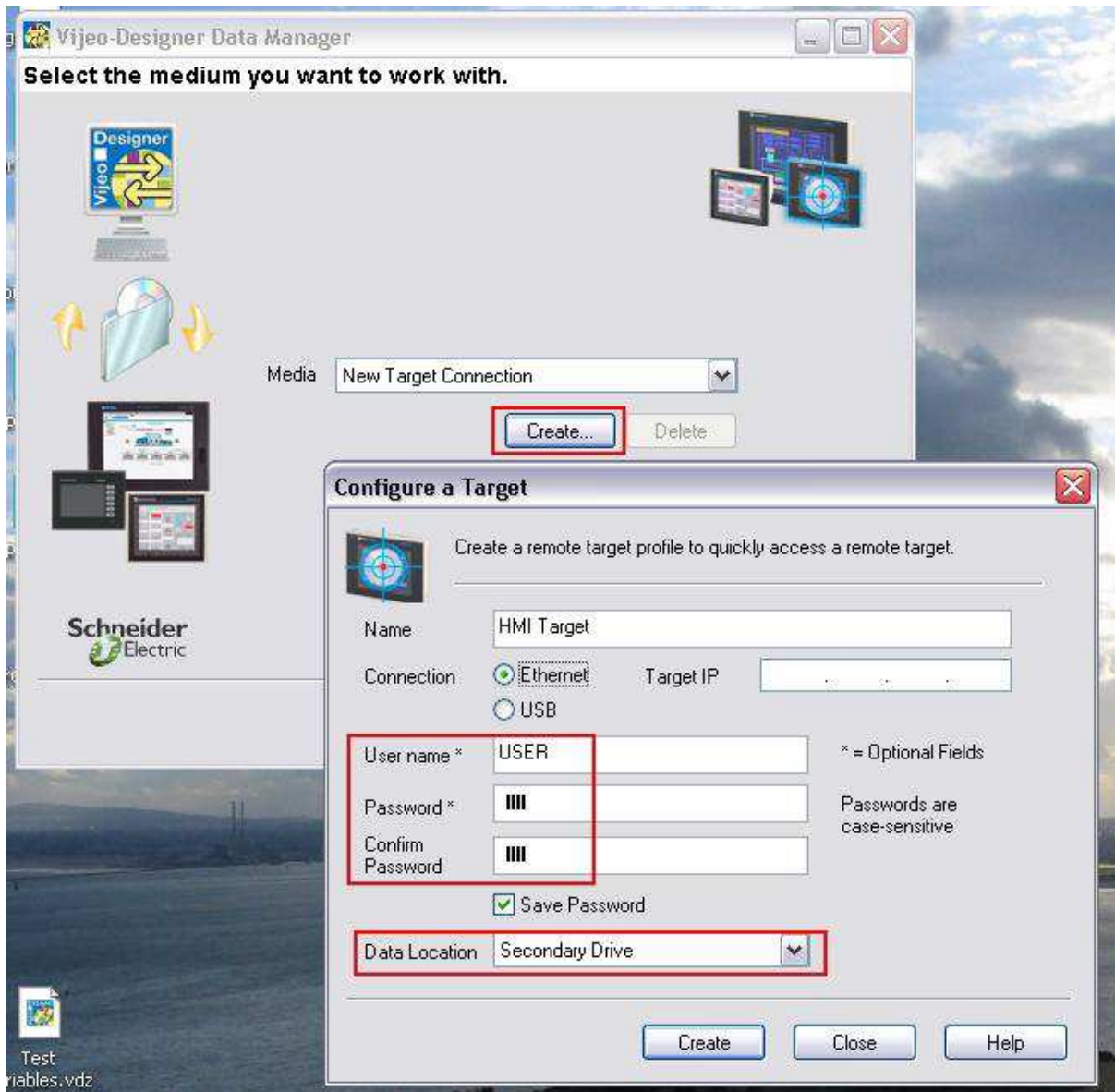
The XBT GT/GK must contain a CF Card. The iPC must contain a secondary CF Card. Before download, the project must be saved in Vijeo-Designer. Due to the copy of the full editor project on CF Card, the time of download may be long.

### 3 - UPLOAD OF THE EDITOR PROJECT

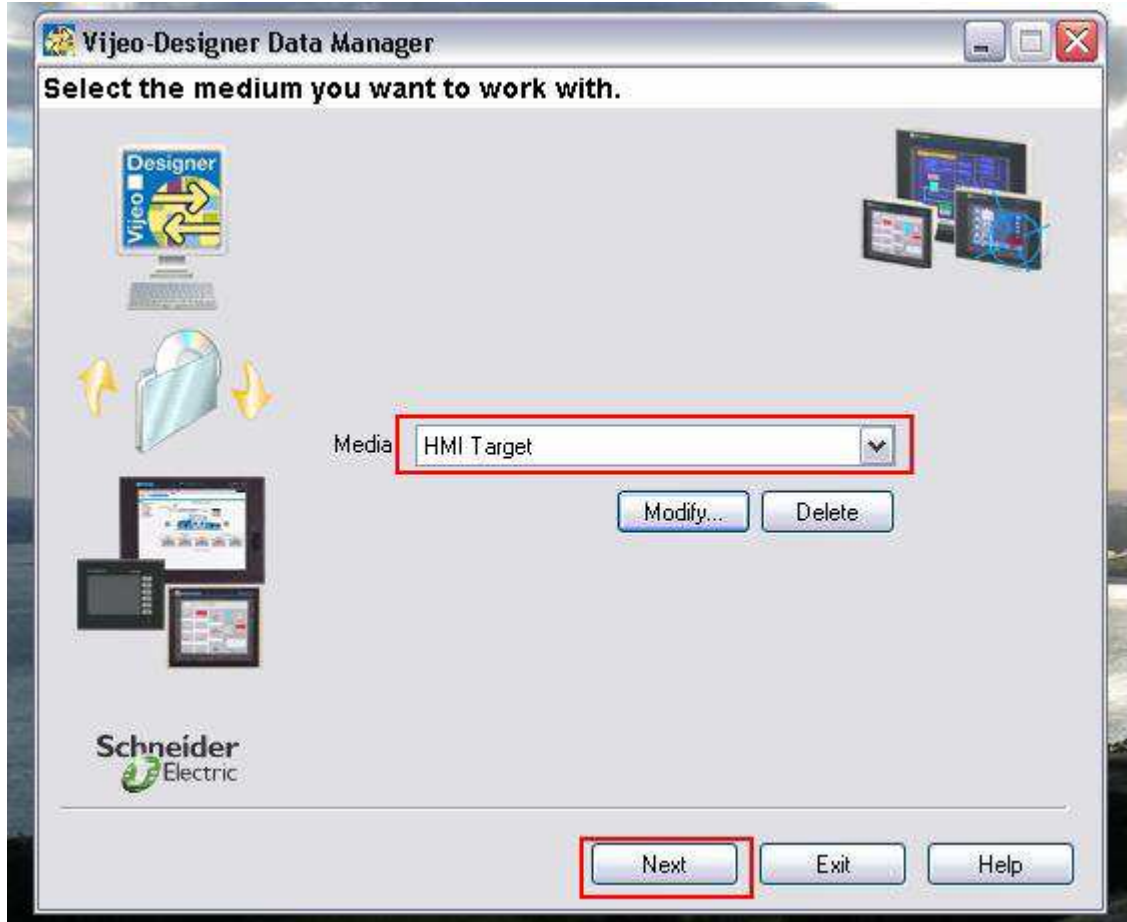
There are two ways to upload the Editor project. The first way is to use the tool Vijeo-Designer Data Manager to connect to HMI target. The second way is to plug the CF Card on PC.

- Use Vijeo-Designer Data Manager:

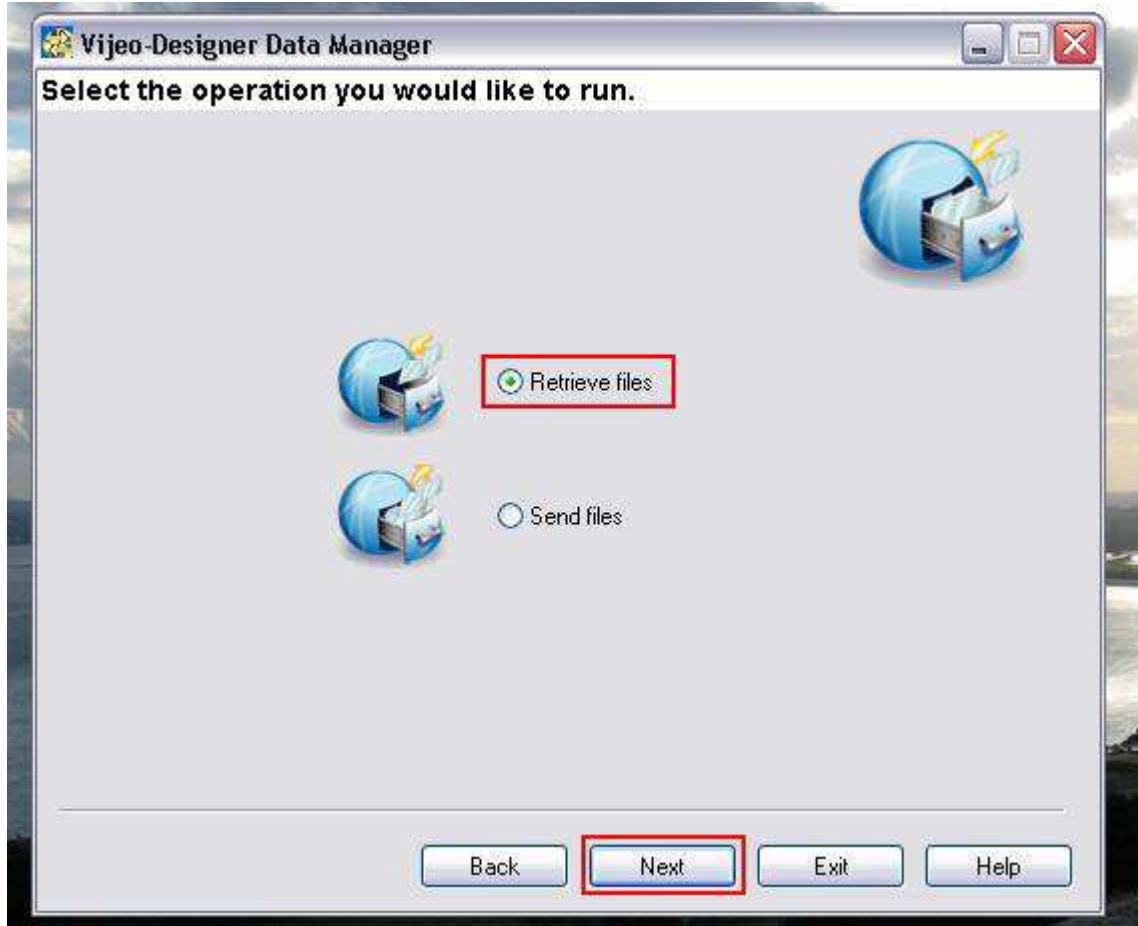
If you connect the Data Manager to the target for the first time, you need to configure this target. For this, select New Target Connection and click Create: in the popup window, mind to use a User name and password with at least Read Only rights (as configured in step 1-c) and set Secondary Drive as Data Location. Click on Create to validate the configuration.



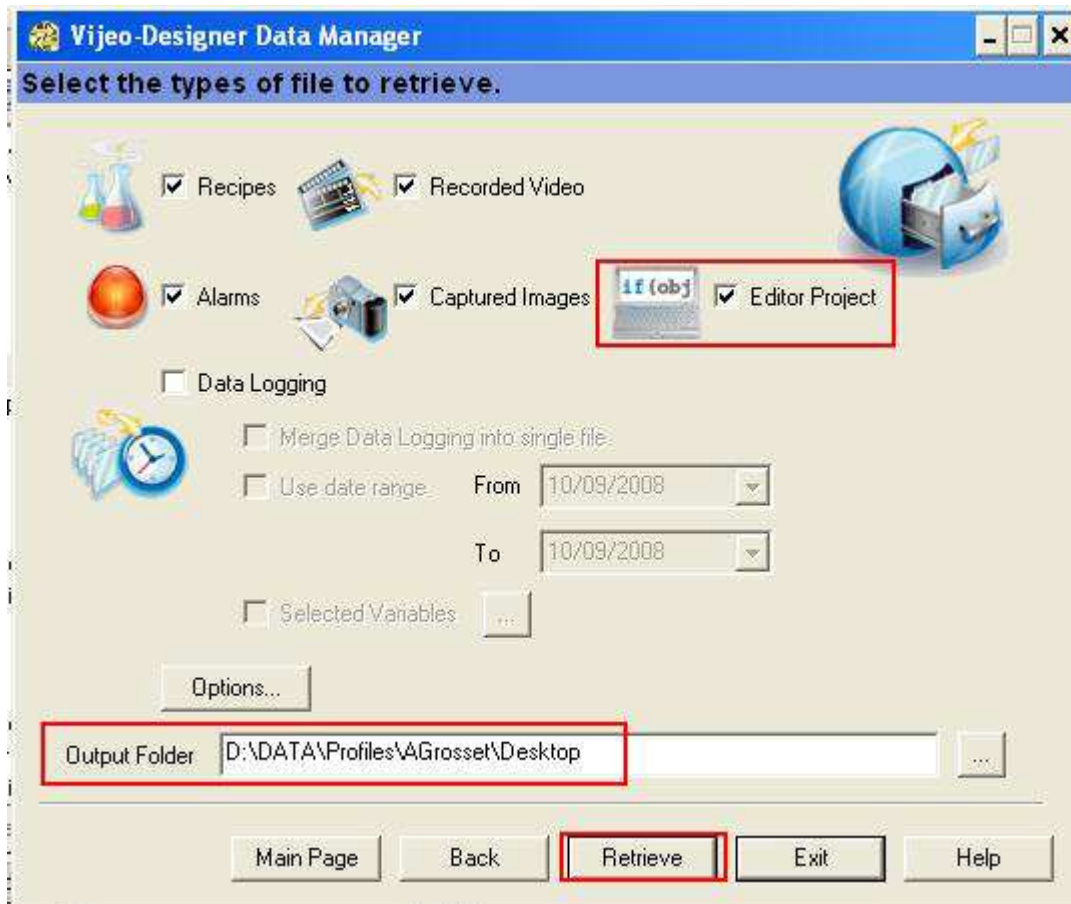
Select the configured target and click Next.



Select Retrieve files and click Next.



Among the data that you want to retrieve, select the editor project. Setup the location where the data must be copied. Click on Retrieve to upload the editor project.



- Connect CF Card to PC
  1. Extract the CF card and connect it to the PC.
  2. Browse the CF Card. The editor project is located at the path:  
(*Drive Letter*):\PUBLIC\PROJECTS\*(Target name)*\DATA\PROJECT.

The resulting project is in VDZ format. It must be imported in Vijeo-Designer for further use.



## Section 4; Online Testing

---

Online testing :

1. Download the program to HMI with check the include project editor
  2. Try to Upload from HMI and get the project from HMI
- 

## Section 5; Remark

By using this way we can upload the HMI project for internal use especially for commissioning, this features can be enable as documentation back up for engineer when they do trial on site.

---