



Knowledge Base

How to Regain Access to EcoStruxure Process Expert System Server

Muhammad Padli

Rev 1.0
02 December 2019

Disclaimer

⚠ CAUTION

This technical document is NOT a training or instruction tool or a substitute for hands-on training for the installation, use or maintenance of Schneider Electric equipment. It is provided merely as a demonstration of the installation and configuration of our products, and may ONLY be used as a supplemental reference by a competent service technician who is fully trained in the care, operation and maintenance of the installed electrical equipment. Although reasonable care has been taken to provide accurate and authoritative information, Schneider Electric assumes no responsibility for any consequences arising out of the use of this presentation.

Schneider Electric cautions you that electrical equipment should be installed, serviced or maintained ONLY by qualified electrical maintenance personnel. Remember that all sources of electrical power must be disconnected prior to visual inspection, tests, maintenance or installation of any electrical equipment. Failure to do so can result in serious personal injury, property damage, OR death.

© 2020 Schneider Electric. All rights reserved.

Trademarks

Schneider Electric has made every effort to supply trademark information about company names, products and services mentioned in this manual. Trademarks shown below were derived from various sources.

EcoStruxure Process Expert is trademarks owned by Schneider Electric or its affiliated companies. All other trademarks are the property of their respective owners.

General Notice:

Some product names used in this manual are used for identification purposes only and may be trademarks of their respective companies.

Table of Contents

1	INTRODUCTION AND OBJECTIVE	4
2	WHAT YOU SHALL DO?	4
3	RESOLUTION WITHIN OPERATING SYSTEM (OS) ENVIRONMENT	6
3.1	EcoStruxure Process Expert Role Based Access Control (RBAC)	6
3.2	Re-set your password	7
3.3	Set Roles to Existing Users	8
3.4	Create New User with Access to EcoStruxure Process Expert System Server.....	10

1 INTRODUCTION AND OBJECTIVE

Are you experiencing problem logon into EcoStruxure Process Expert System Server?
Are you forgot the password?
Or you want to set up another user name?

If your server or workstation is managed and connected to domain controller then simply ask your domain administrator to re-set your password or give your account access to the roles of "ESX HDCS System Admin".

However, if the server or workstation is managed by your-self running on Physical Machine or Virtual Machine (VM) then this document will guide you how to regain your access to EcoStruxure Process Expert System Server in above case.

There are some workarounds to resolve this problem. This document will explain all possible workarounds and considerations you need to take before determining the method suits your case.

2 WHAT YOU SHALL DO?

All methods described in this document need access privilege to manage user accounts. This activity will be performed from "Computer Management" feature of Windows.

You need to validate whether your account have access to manage users or not. Typically, only account whose administrator privilege can manage users.

Below is general guidance how to check whether your account have administrator privilege or not.

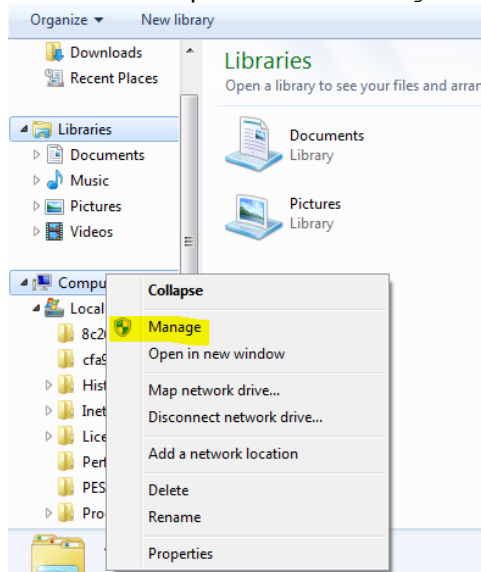
Step 1:

Open "File Explorer".

Step 2:

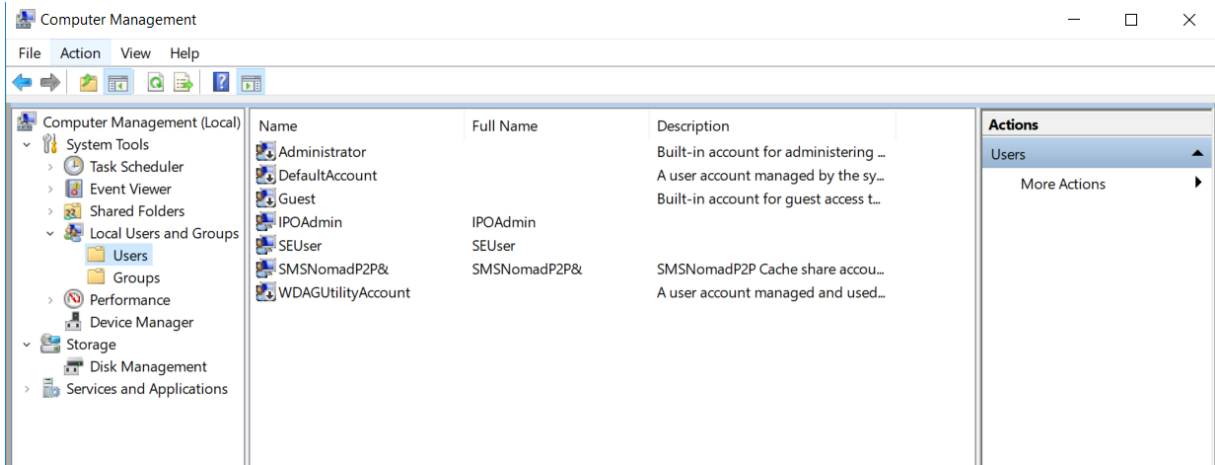
Right Click device "This PC" or "Computer" in "File Explorer". This depends on your Windows version.

You shall see option menu "Manage". Click on this menu.



Step 3:

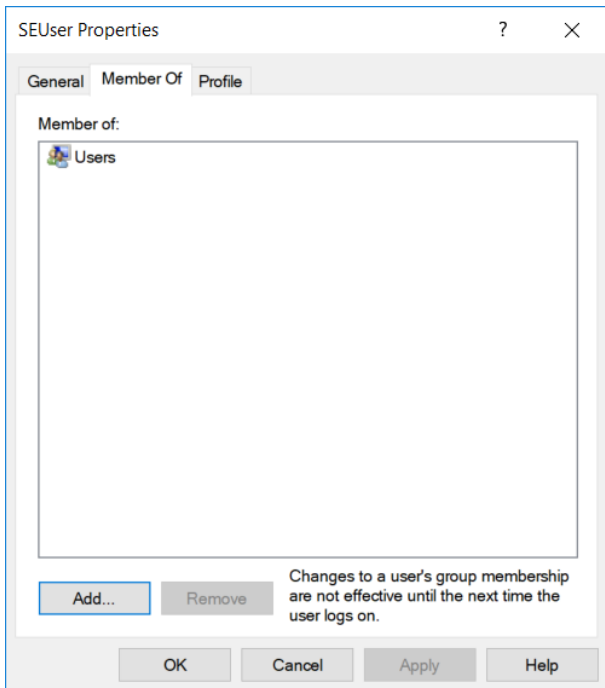
In the "Computer Management" window, click on "Users" under "Local Users and Groups" menu.



You will see list of windows user name including yours. Right click on your account and select "Properties".

Step 4:

Select tab "Member Of" to see your account groups. If your account has administrator privilege, then you must see group "Administrator" in the list. If you don't see, then it means you don't have Administrator privilege. You must have administrator privilege before you can continue.



Tips:
If you are not allowed to do one of steps above, then it means you don't have Administrator privilege. You must have Administrator privilege before you can follow all of steps in this document.

3 RESOLUTION WITHIN OPERATING SYSTEM (OS) ENVIRONMENT

There are three methods you can use to regain your access to EcoStruxure Process Expert System Server.

1. Re-set the password.
2. Set roles to the existing users.
3. Create new users with access to EcoStruxure Process Expert System Server.

However, you need to know about EcoStruxure Process Expert Role Based Access Control (RBAC) scheme before deciding what methods you want to use.

3.1 EcoStruxure Process Expert Role Based Access Control (RBAC)

The objective of role based access control (RBAC) is to administer the tasks that authorized users can perform by assigning them predefined roles.

Roles are associated to groups, which are created either in the operating system of the system server computer or in a domain controller. Users need to be added to these groups and must log in to the various EcoStruxure Process Expert components to be authenticated.

You must have administrator rights on the computer to set up RBAC.

NOTE: If you had set up RBAC for an earlier version of the software, your configuration remains valid when you upgrade.

Below are the roles created automatically by EcoStruxure Process Expert during installation.

Role Name	Permissions
ESX HDCS Server Admin	Full access to the menu bar of the system server and its commands. No access to client functionalities
ESX HDCS Engineer	Perform tasks on the engineering client that are directly related to systems. No access to: <ul style="list-style-type: none"> • System server • Operation client • Global Templates Explorer • Global Root folder, its subfolders, and the corresponding context menu commands in the Content Repository explorer
ESX HDCS Template Designer	Perform tasks on the engineering client that are directly related to Global Templates and not a system. No access to: <ul style="list-style-type: none"> • System server • Operation client • Explorers other than Global Templates Explorer and Content Repository explorer • Systems folder, its subfolders, and the corresponding context menu commands in the Content Repository explorer

	<ul style="list-style-type: none"> Inspect → External References context menu command of a template in the Global Templates Explorer.
ESX HDCS Operator	<p>Full access to the functionalities of the operation client only.</p> <p>No access to:</p> <ul style="list-style-type: none"> System server Engineering client

If you are developing EcoStruxure Process Expert programming, then it is recommended to give your account privilege to all above roles.

Before you continue, please check role privileges of your account or other accounts. Please follow the steps in section 2 page 3,4 of this document.

3.2 Re-set your password

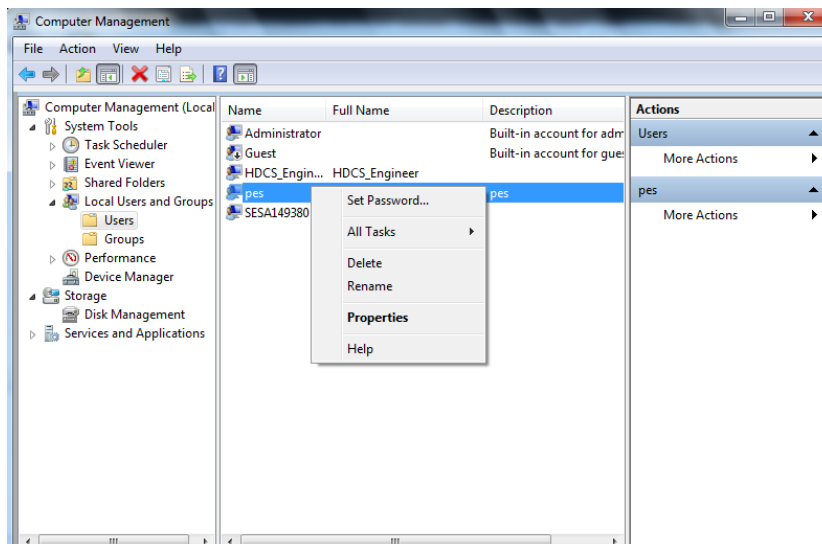
Before re-set the password please consider that other people using the workstation can't logon anymore to the system with the old password.

Please ensure the account you want to use already have "ESX HDCS Server Admin" privileges. If the account does not have this privilege, then you can't logon to EcoStruxure Process Expert System Server. Follow section 3.3 of this document to set roles for specific user accounts.

If you have verified the account, then please follow steps 1 until steps 3 described in section 2 page 3,4 of this document. Continue with the following steps.

Step 1:

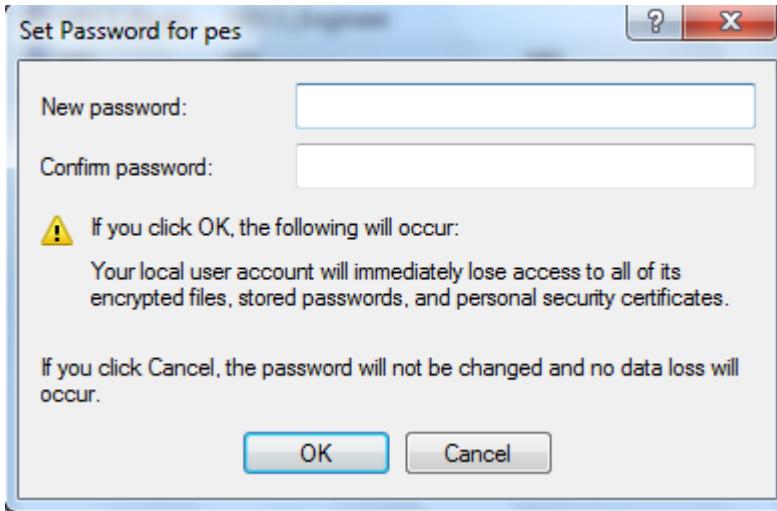
In the "Computer Management" window, click on "Users" under "Local Users and Groups" menu.



You will see list of windows user name including yours. Right click on your account and select "Set Password...".

Step 2:

You will get notification. Click "PROCEED" then set your desired password. Click "OK" .



Please use this new password to logon to the EcoStruxure Process Expert System Server.

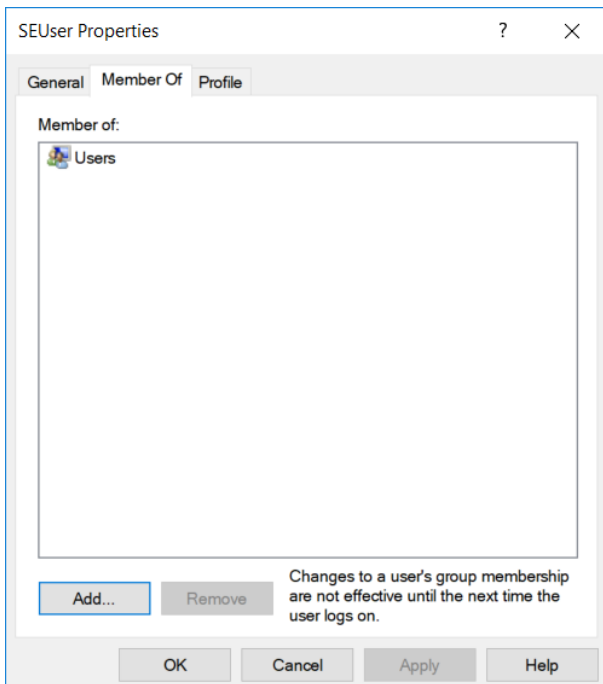
3.3 Set Roles to Existing Users

The idea of this method is to give access to account or user that you know its password. Therefore, please ensure you exactly know the password of accounts you want to use.

Please follow steps 1 until steps 4 described in section 2 page 3,4 of this document. Continue with the following steps.

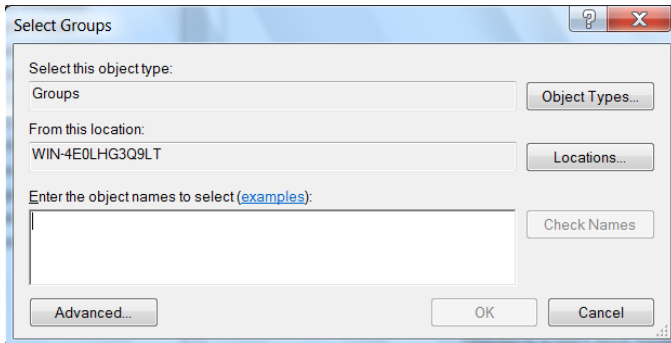
Step 1:

Click "Add" button.



Step 2:

A window will open enabling you to add roles for the specified user.

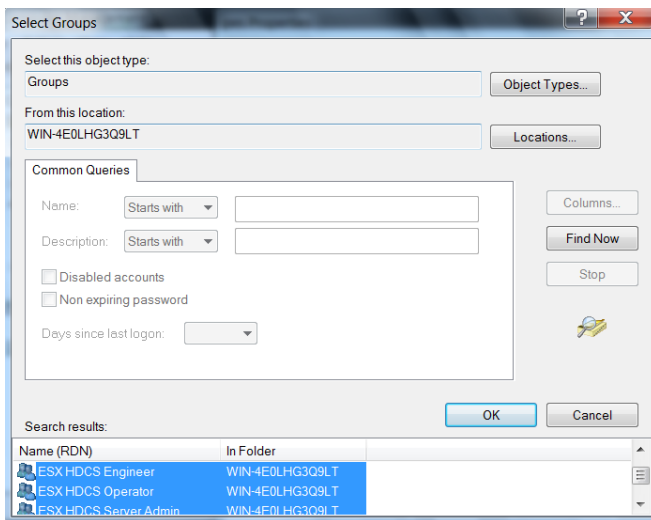


Step 3:

Click “Advanced” button located at left bottom of the window then another window will be open.

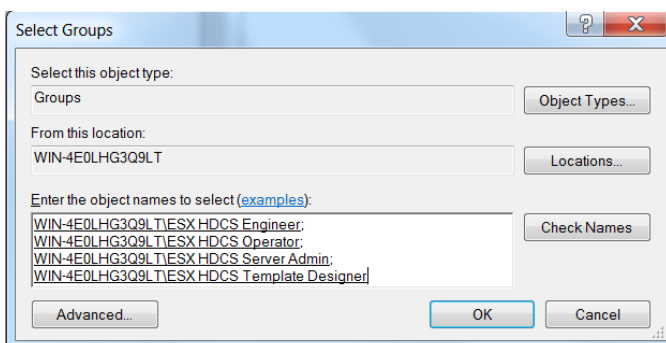
Step 4:

Click “Find Now” button to populate all user groups available in the Windows OS. Select “ESX HDCS Engineer”, “ESX HDCS Operator”, “ESX HDCS Server Admin”, and “ESX HDCS Template Designer”. Press “Ctrl” key on keyboard while selecting each groups/role to enable multiple selection. Click “OK”



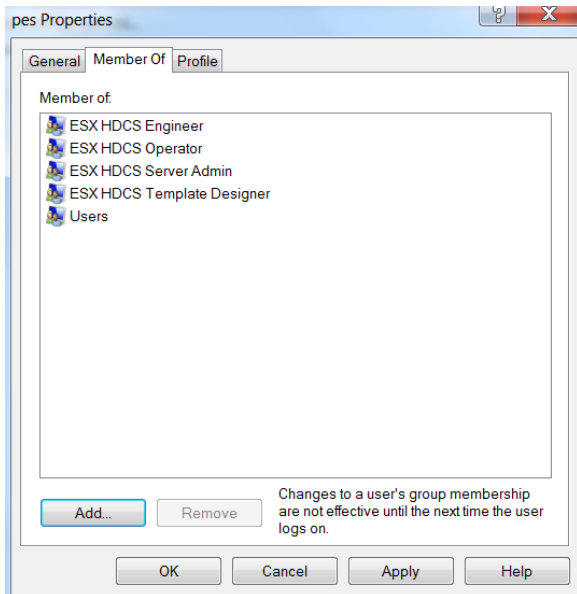
Step 5:

Please ensure all above four groups are listed in the selection box as shown below. Click “OK”



Step 6:

Finalize the actions by click “OK” once again to confirm.



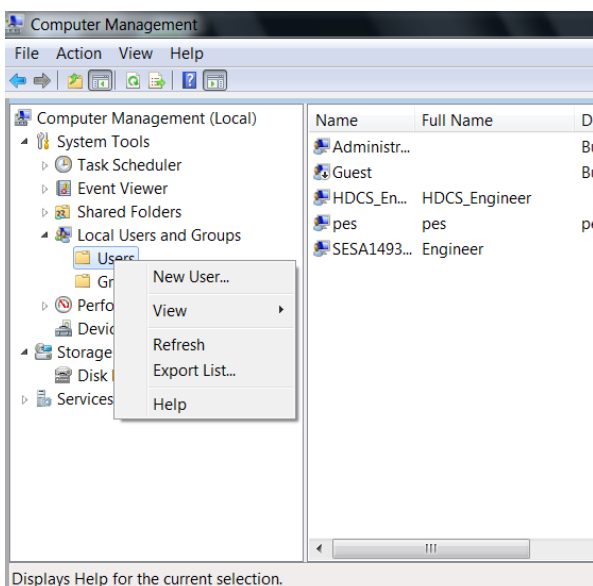
Please repeat all steps above (step 1-6) to give access to other users.

3.4 Create New User with Access to EcoStruxure Process Expert System Server

To create a new user, please follow steps 1 until steps 3 described in section 2 page 3,4 of this document. Continue with the following steps.

Step 1:

Right click the “Users” sub-menu then select “New user”.



Step 2:

Specify the new “User name” and set the password. Click “Create” button upon finish, then Close the window to see the new user name listed in the user list.

The image shows a 'New User' dialog box with the following fields and options:

- User name: [Text Input Field]
- Full name: [Text Input Field]
- Description: [Text Input Field]
- Password: [Text Input Field]
- Confirm password: [Text Input Field]
- User must change password at next logon
- User cannot change password
- Password never expires
- Account is disabled

Buttons at the bottom: Help, Create, Close

Step 3:

Set roles of the new user name by following all steps in section 3.3 page 7,8, and 9 in this document.