

How to add a customer logo to EPE - EcoStruxure Process Expert - supervision project based on Situational Awareness Library

Knowledge Base

ARTUR PEDROSA
EcoStruxure Plant Competency Center – Technical Leader

Rev 1.0
18 June 2020

Disclaimer

CAUTION

This technical document is NOT a training or instruction tool or a substitute for hands-on training for the installation, use or maintenance of Schneider Electric equipment. It is provided merely as a demonstration of the installation and configuration of our products, and may ONLY be used as a supplemental reference by a competent service technician who is fully trained in the care, operation and maintenance of the installed electrical equipment. Although reasonable care has been taken to provide accurate and authoritative information, Schneider Electric assumes no responsibility for any consequences arising out of the use of this presentation.

Schneider Electric cautions you that electrical equipment should be installed, serviced or maintained ONLY by qualified electrical maintenance personnel. Remember that all sources of electrical power must be disconnected prior to visual inspection, tests, maintenance or installation of any electrical equipment. Failure to do so can result in serious personal injury, property damage, OR death.

© 2020 Schneider Electric. All rights reserved.

Trademarks

Schneider Electric has made every effort to supply trademark information about company names, products and services mentioned in this manual. Trademarks shown below were derived from various sources.

EPE EcoStruxure Process Expert, M340, M580, EcoStruxure, Premium, FactoryCast, Quantum, Advantys, X80, OFS and Citect SCADA are trademarks owned by Schneider Electric or its affiliated companies. All other trademarks are the property of their respective owners.

General Notice:

Some product names used in this manual are used for identification purposes only and may be trademarks of their respective companies.

Knowledge base at a Glance:

About 5 minutes reading

- Prerequisites: Previous experience with EcoStruxure Process Expert and Citect Scada.
- Based in support experiences and lessons learned from real project.
- This kb do not intend to explain how to create a EPE supervision project but to give best practice advises on how to customize a EPE project based on General Purpose Library – GPL Situational Awareness.

- Software versions used in the kb:
 - EcoStruxure Hybrid DCS 2019.
 - GPL SA R2.

- This kb also apply to EcoStruxure Process Expert 2020 and further versions based on GPL SA.
- Keep reading this article to learn how to customize the GPL workspace with customer logo.

Introduction

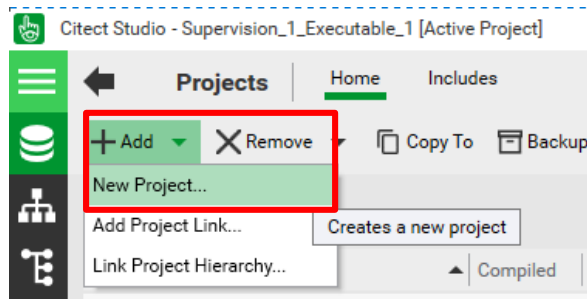
1. The GPL SA workspace include project is based on Citect Scada Situational Awareness template.
2. The General Purpose Workspace leverage from Citect Scada Parameter Page Logo as show on the picture.
3. Do not set the Page Logo parameter using the Computer Setup Editor.
4. This kb uses global parameters embedded in a include project rather than .ini file to make the logo available to all EPE operation server and clients.

The screenshot shows the 'Computer Setup Editor' window. The left pane displays a tree view of project files, including folders like 'Alarm', 'Backup', 'Client', and 'DRAW'. The main area shows the 'Citect SCADA' interface with a search bar and navigation links. The current view is 'Parameters > Parameter Categories > Page Parameters > [Page]Logo'. The parameter details for '[Page]Logo' are shown, including a description: 'This sets a symbol to display in the logo area of the templates.' It also lists 'Logo size' requirements for different template types and provides 'Allowable Values' and a 'Default Value' of '<None>'. There are 'Enable', 'Toggle', and 'Generate' buttons, along with 'Clear' and 'Add' buttons at the bottom.

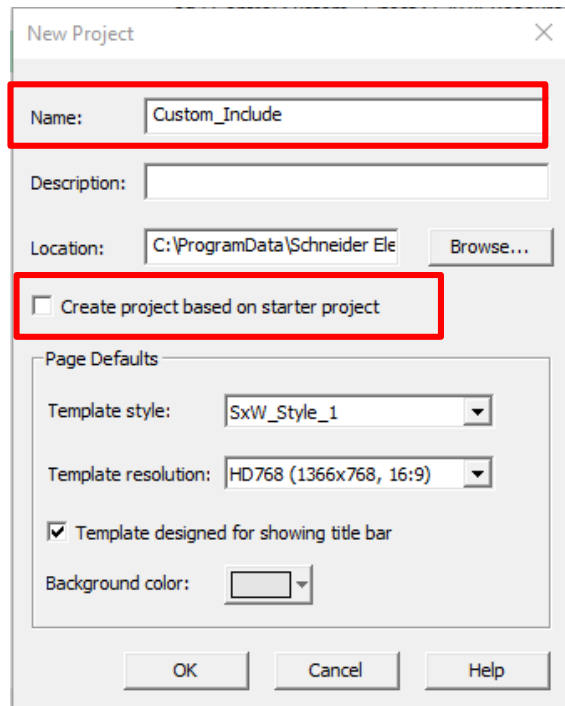
Creating a custom include project

You must use Citect Scada outside of EPE environment

1

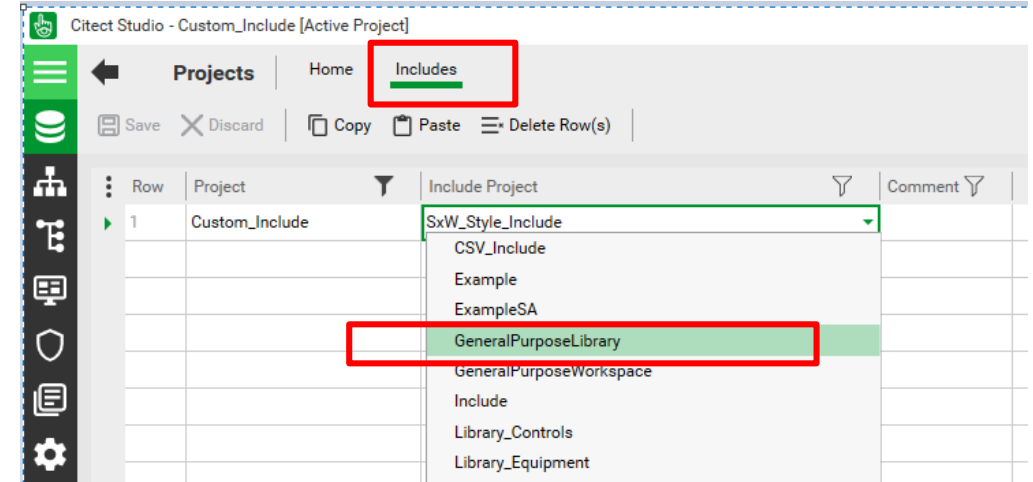


2



- ❖ The Include project name can be any name.

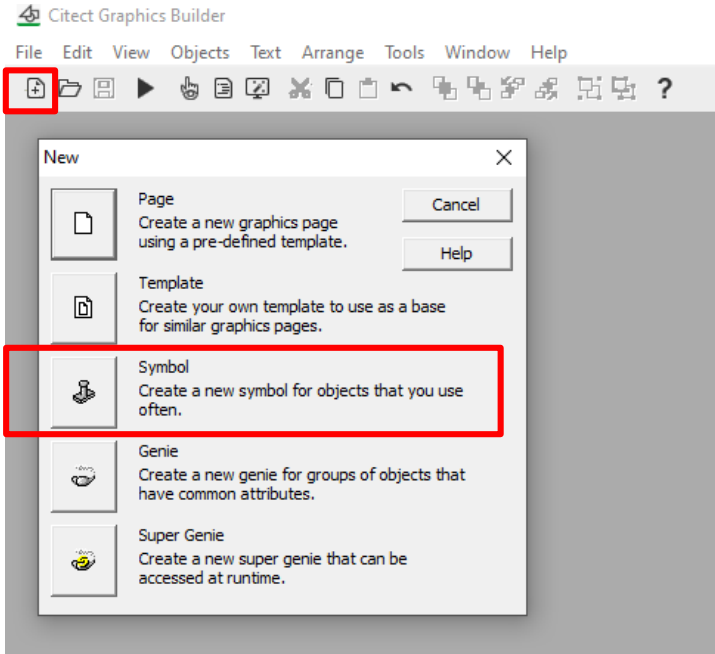
3



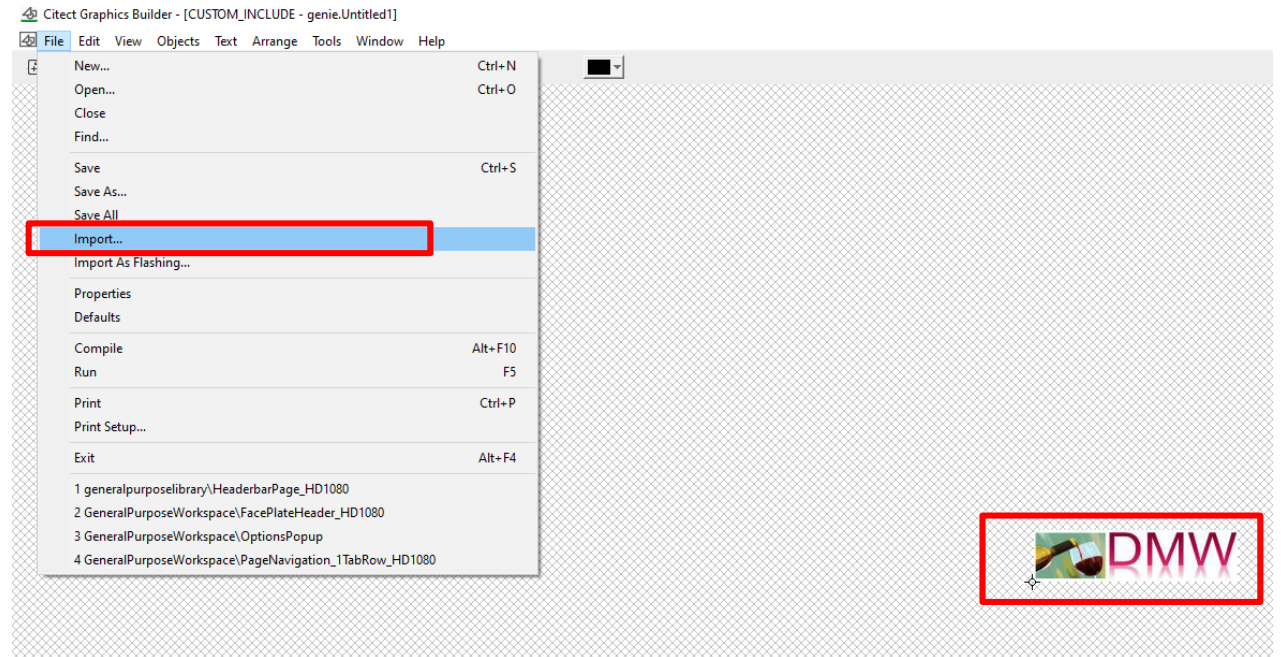
- ❖ Change the include project of your custom include to GeneralPurposeLibrary.

Importing customer logo into new include project

1

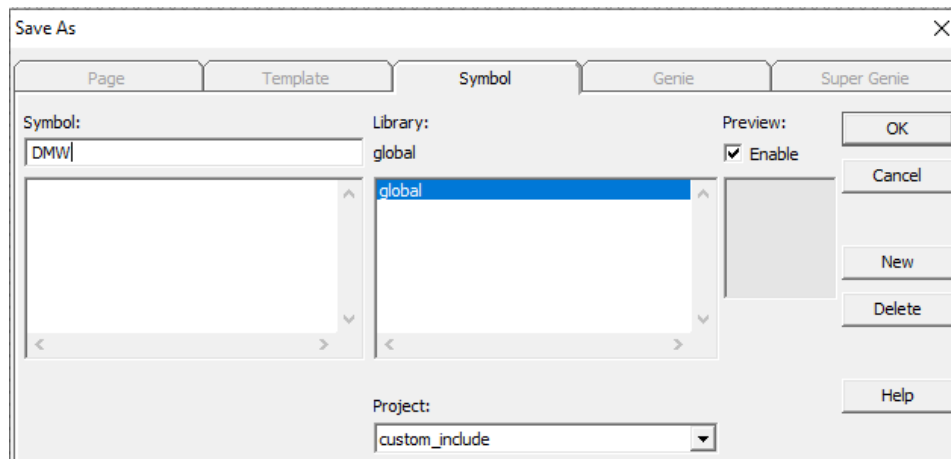


2



3

- ❖ Save the symbol in the global library.



- ❖ Position the symbol in the top right as picture above.

Global Parameter

Adding the [Page]Logo parameter as global parameter

Citect Studio - Custom_Include [Active Project]

Setup | Alarming | **Parameters** | Screen Profiles | Devices | Events | Languages | Keyboard Keys | Custom Files

Save | Discard | Copy | Paste | Delete Row(s) | Export All | Import All

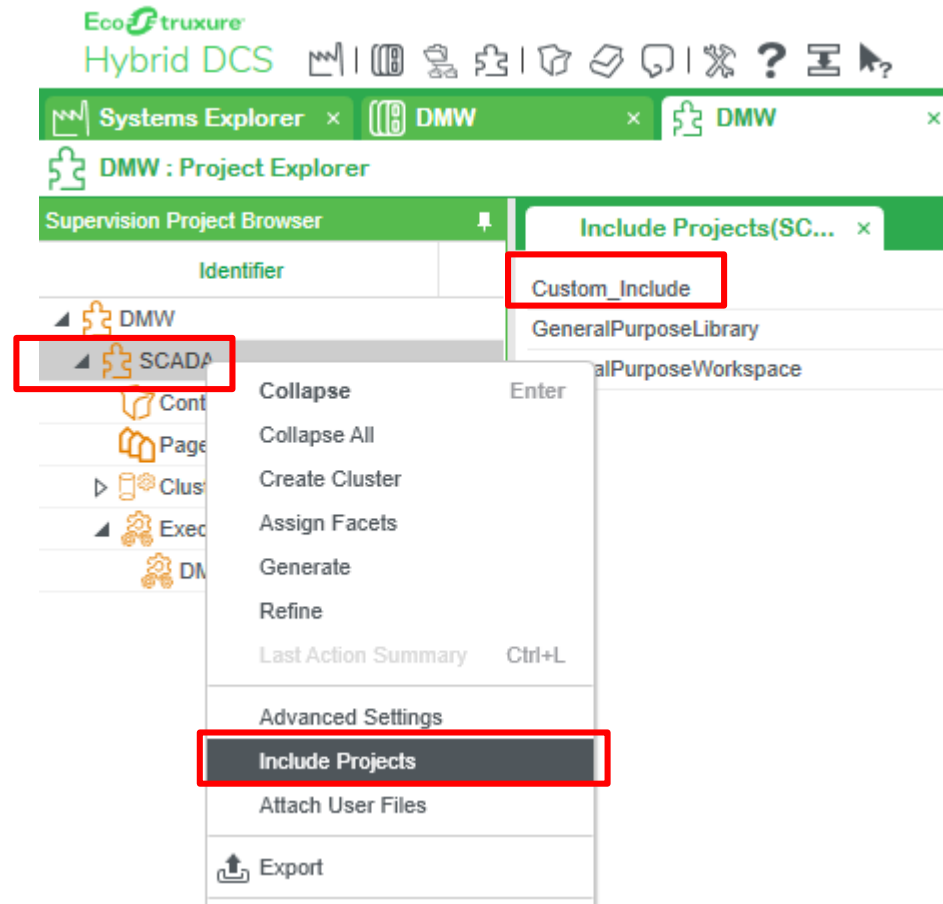
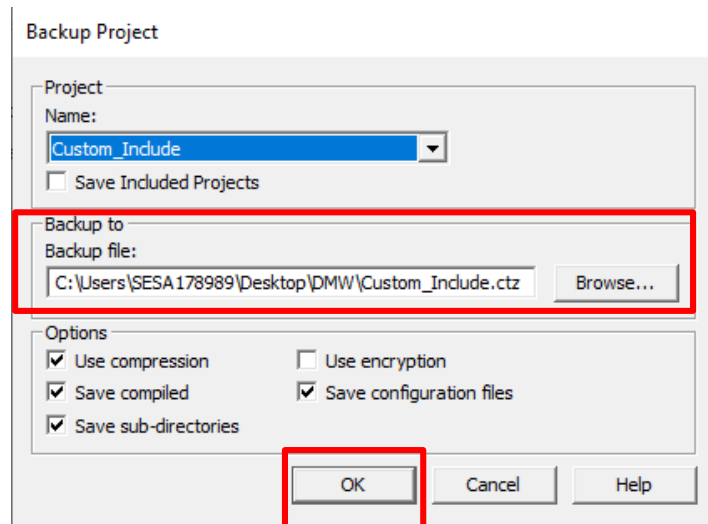
Row	Section Name	Name	Value	Comment	Project
1	PAGE	Logo	Global.DMW	Resolution less than or equal to 190 x 48 pixels	Custom_Include

- ❖ Use the name that you save the symbol in the format: library.symbol

Backup and importing the include in EPE

Importing the backup in EPE Engineering Client

1



- ❖ After importing the custom include project, generate and build the executable and then deploy with include projects.

Running the EPE supervision project

The configuration on the include project will replace automatically the EPE logo in all pages with customer logo.

The screenshot displays the DMW MyPlant > Demo interface. The top navigation bar includes the DMW logo (highlighted with a red box), home, back, forward, and search icons, the plant name 'P12 MyPlant > Demo', user information 'User: User will all perm...', settings, and the date/time '16:06 Thursday, June 18, 2020'. The main workspace shows a process diagram with pumps (P1201, P1202, P1203, P1204, P1205, P1206) and valves (V1211-V1215). A 'Pumpset for supply' window is open, showing 'State: Running program ..', 'Strategy: Program SPL', and 'Diagnosis state: Normal'. A 'Flow control for distribution' window is also open, showing 'State: Running program ..', 'Strategy: Program SPL', and 'Diagnosis state: Normal'. A flow meter F11201 is highlighted with a blue box, showing a value of 1750.0 m3/h. A 'Simulation' button is visible at the bottom right. A table at the bottom of the interface shows an alarm record:

OnDate	OnTime	Asset	Name	Description	Cause
2020-06-18	16:05:59	F11201	Supply water flow	Deviation Alarm	

Conclusion

- ❖ This article explains a very convenient way to customize a project using GPL SA workspace without changing the library.
- ❖ If a System Integrator or a Process OEM wants to have their logo and also their client/end user logo on the supervision screens will be necessary to combine those 2 logos on the same image.
- ❖ The recommended resolution for the image is **190 x 48 pixels**.
- ❖ The easiest way to resize any image is by using windows 10 photo app. That is a default app on windows 10.

Life Is On

Schneider
Electric

Life Is On

Schneider
Electric