

Project parameters | Design and sizing | Smart Solution | Report

Single-line diagram

Operating mode: Normal

Calculate project

Data | Calc results | Solutions | Smart solution | More info

Page Settings

Properties | Details | Curves

**Circuit breaker**

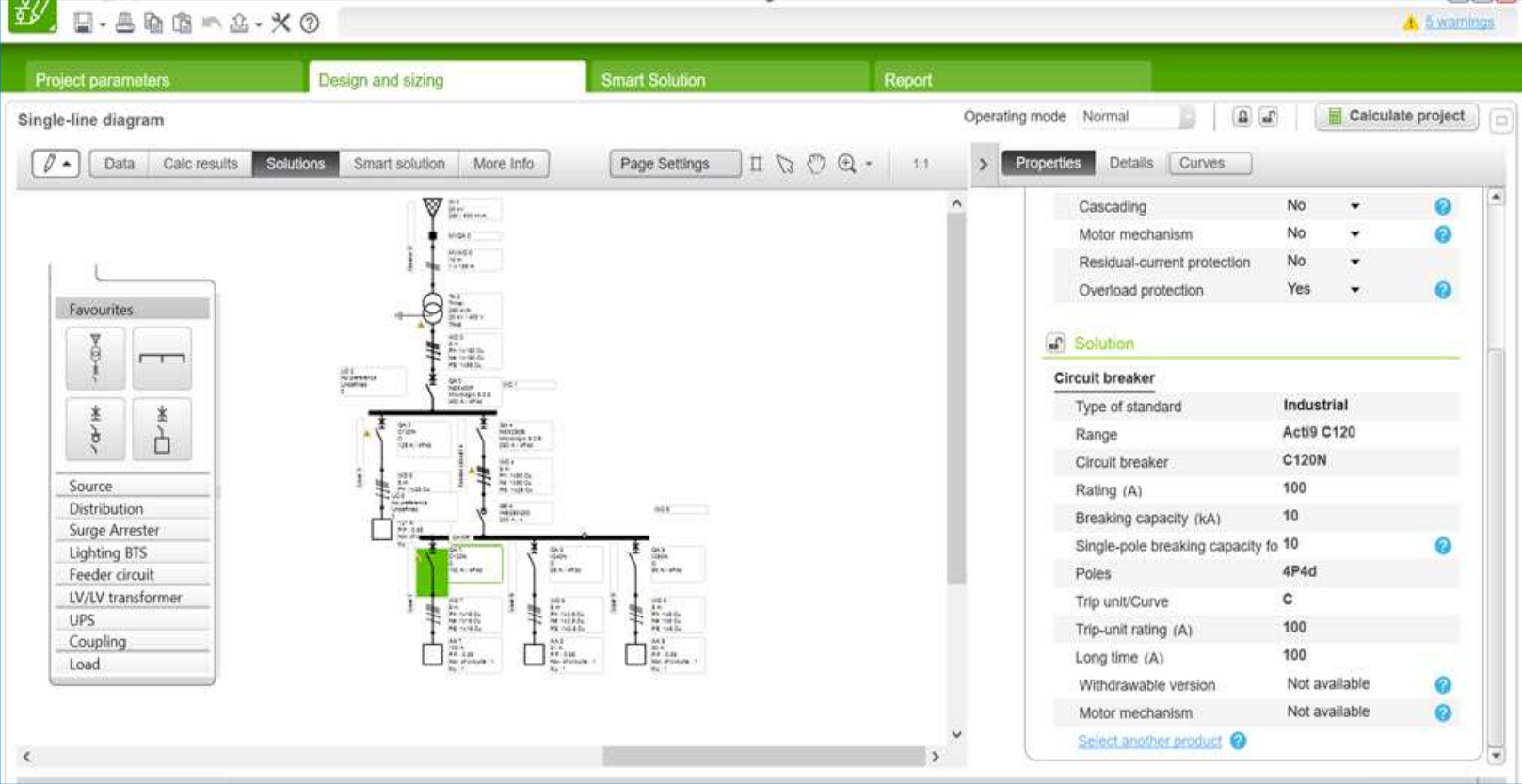
Type of standard	Industrial
Range	Acti9 C120
Circuit breaker	C120N
Rating (A)	100
Breaking capacity (kA)	10
Single-pole breaking capacity (kA)	10
Poles	4P4d
Trip unit/Curve	C
Trip-unit rating (A)	100
Long time (A)	100
Withdrawable version	Not available
Motor mechanism	Not available

Select another product

EcoStruxure Power Design – Ecodial :  
How to select Or change the “Report Language.”

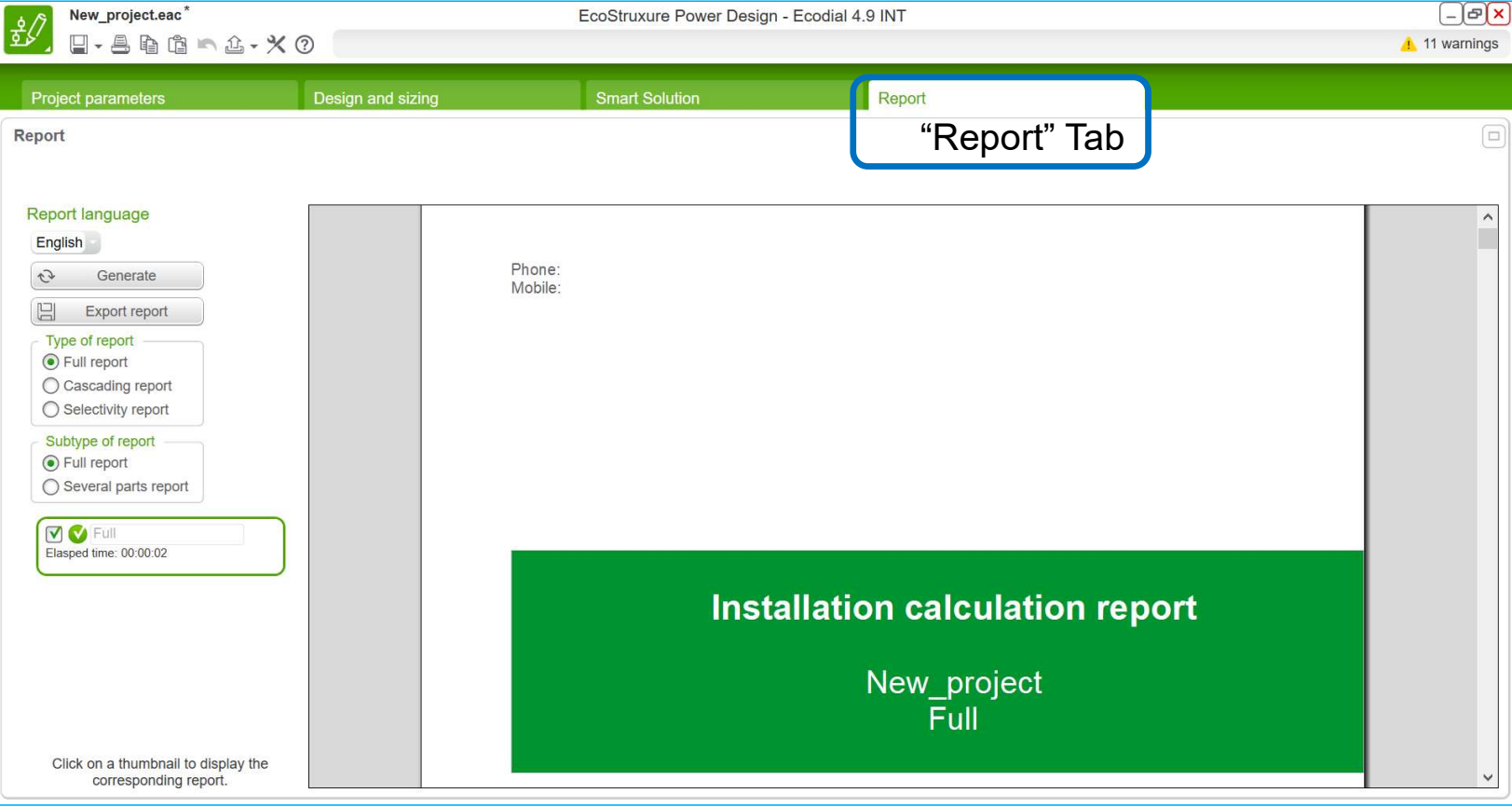
# How to change the report language

Draw the electrical network as per the requirement and calculate the project.



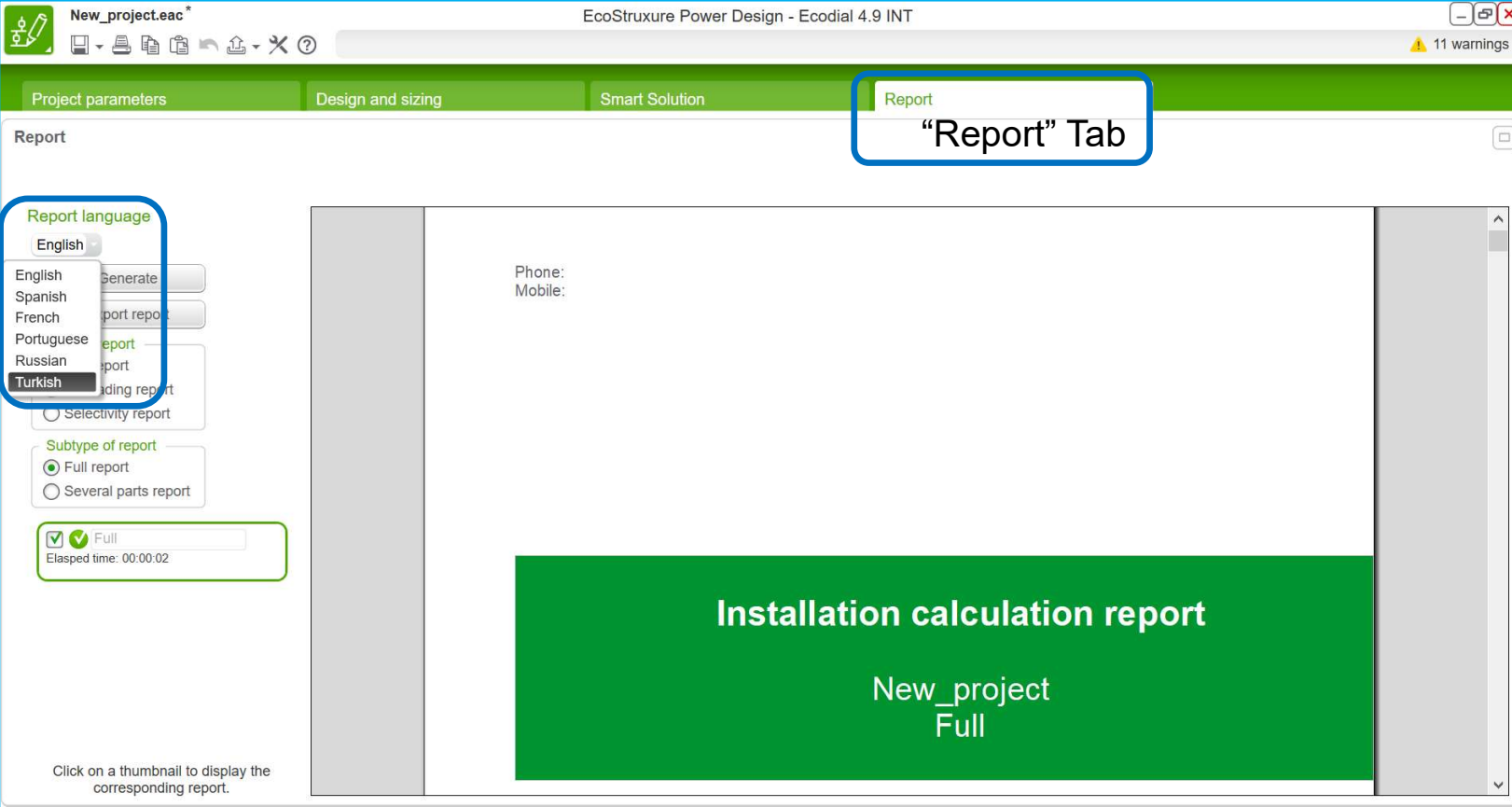
# How to change the report language

After successful calculation switch to “Report” tab. Application will generate report in default language



# How to change the report language

At the Left-hand side, there is an option to change the report language.



# How to change the report language

Change the language (ex. Turkish) and click on the **Generate** button. The report will be generated for the selected language.

The screenshot shows the EcoStruxure Power Design - Ecodial 4.9 INT software interface. The 'Report' tab is selected and highlighted with a blue box labeled 'Report Tab'. The 'Report language' is set to 'Turkish'. The 'Generate' button is visible. The report content is in Turkish and includes the following sections:

## 1. Proje Açıklamaları

### 1 Proje Genel Seçenekleri

Yükleme Standardı	IEC60364
Hesaplama Standardı	TR50480
Devre Kesici Standardı	IEC 60947-2
Frekans	50 Hz

### 2 İletken Seçimi

Maximal CSA	300 mm <sup>2</sup>
-------------	---------------------

### 3 Yük Listesi

1 Generic loads								
Ad	Sr (kVA)	Pr (kW)	Ir (A)	Cosφ	Adet	Polarite	Doğrusal olmayan yükler	THDi 3 (%)
AA 6	13,9	11,8	20	0,85	1	3 faz 1 nötr	Hayır	0
AA 10	139	118	200	0,85	1	3 faz 1 nötr	Hayır	0
AA 11	208	177	300	0,85	1	3 faz 1 nötr	Hayır	0
AA 12	416	353	600	0,85	1	3 faz 1 nötr	Hayır	0

Click on a thumbnail to display the corresponding report.

Life Is On

Schneider  
Electric

Life Is On

Schneider  
Electric